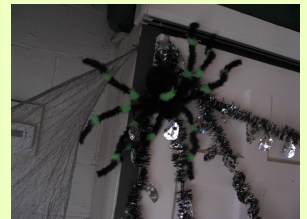


NOVEMBER 2016

2016 Pumpkin Carving

A good time was had by all at this year's event! We carved pumpkins, we painted rocks, and we enjoyed chili dogs, donuts & cider. Thank you to all who participated in the fun, and for the helpers who stayed after to clean up! Special thanks to Terri Peterson from Comcast for the donuts and cider, and to Les Crots from Superior Mow and Snow for the pumpkin donation!



Streaming on Comcast's high speed internet is made even easier using the X1 platform from Comcast. Launching today, Comcast customers can now stream using the Netflix app right from their X1 platform from the app or the On-demand menu! Don't have the X1? Call today and upgrade for no additional monthly fee!

XFINITY Communities™

Best Wishes, Terri Peterson
Account Representative



FALL LEAF REMOVAL

NOVEMBER 1-11

**ERADICO PEST CONTROL WILL
NOW PROVIDE SERVICE ONCE A
MONTH, ON THE 1ST THURSDAY,
NOVEMBER THROUGH MARCH.**

*This program is separate from the fall garden and plant
clean-up program*

Please call 734-971-0233 for an appt.

Snow Birds

The following suggestions are for Residents who leave for an extended period of time in the winter months.

A suggested temperature of the home is 65-68 degrees while you are away.

If you are going to be gone for an extended period of time you might consider increasing the temperature to help if the outside temperature reduces.

Open kitchen and bathroom cabinet doors to allow warmer air to circulate around the plumbing.

When the weather is very cold outside, let the water drip from the faucet served by exposed pipes. Running water through the pipe—even at a trickle—helps prevent pipes from freezing because the temperature of the water running through it is above freezing.

Have someone check on your home if you are leaving for an extended period of time. be sure to alert the office as well, and that emergency contact information is on file. Better to be safe than sorry!

Turn the outside water off to the hoses. letting the water drain and emptying the pipes will help reduce the chance of freezing pipes.

Install the plastic wrap or a similar product to the windows of the home. This helps prevent the wind from seeping into the home and will maintain a constant inside temperature.

IN THE GARDEN– November 2016

By Lisa Joseph, Staff Horticulturist

The warm sunny fall days of October remain fondly in my memory. The glorious orange and yellow fall color of the Sugar Maple in my yard was breathtaking. I rode my bike around town, worked in my garden beds, and raked leaves with my dog (well, I raked while he barked at the rake and dug around in my piles). Now begins the cold, damp days of November. Hibernation time. Sunny days in November are a sublime gift to cherish!

I've been asked many times about the technique for overwintering Dahlia tubers. My answer? The following method worked for me years ago when I had a cool, dry location in which to store them. I've been hesitant to try it in my new house. I'm going to, though, this winter with a few special varieties that I picked up from Old House Gardens and really want to grow again next summer. It will be a fun and interesting project even if I'm not too successful.

The Dahlia Tuber Overwintering Technique:

1. Cut back the Dahlia stems in late fall, preferably after a frost has blackened the stems.
2. Carefully dig up the plant with a sizable root ball intact.
3. Let the clump dry out for three days in a location out of direct sun and protected from freezing temperatures.
4. Remove as much of the soil as possible but take care not to damage the fragile tuber clump.
5. Store in a ventilated box or crate in moistened sand or peat moss. The area where they are to be stored should be cool and dry.
6. Check on your specimens periodically to ensure that they aren't drying out or rotting. If they are dry, mist them with water. If there are rotted areas, prune these out.

Minor bulbs are a diverse group of compact flowers that bloom in very early spring when their bright colors are most welcomed. Well-drained soil is essential for success. These small bulbs will rot in waterlogged sites. Because of their diminutive size, they need to be planted in large drifts or groupings in order to make a statement. Most will grow under the tree canopy because they bloom while the tree is still dormant. After planting, to stimulate root growth, fertilize the area with bone meal or a fertilizer made especially for bulbs. Plant minor bulbs around perennials so that the yellowing foliage of the bulbs will be hidden by the fresh, emerging foliage of the perennials. When planting large groupings of minor bulbs, excavate the entire area to the proper depth, arrange the bulbs, then back fill.

Minor Bulbs to try: Crocus, Chionodoxa (Glory of the Snow), Iris reticulata, Puschkinia (Striped Squill), Species Tulips, Galanthus (Snowdrops), Scilla (Squill), Muscari (Grape Hyacinth), and Miniature Daffodils.



LISA'S FEATURED PLANT: GOMPHRENA 'FIREWORKS'- Globe Amaranth



This is an annual that works well among perennials. At 4 feet in height and with a 2-foot girth, it makes a bold statement in the garden. Weaving in and out of its neighbors, with its round, bright pink, yellow-tipped flowers, Gomphrena 'Fireworks' is a dazzling sight. I've heard others say that it will self-seed, but I use it every year and find that it never causes me a headache with its prolific tendencies. The flowers are so enchanting in a cut flower display and last for weeks in a vase.

COOL CREATURE TO SHARE:

The Saddleback Caterpillar is lime green with brown on both ends and a white-ringed brown dot in the center. The green middle section looks just like a miniature saddle. It has a pair of horns at either end. The hairs on this caterpillar secrete venom that causes a swollen, painful rash. Don't touch! I wondered what in the world was munching on my Gladiolus foliage, and I found that the Saddleback Caterpillar in the attached photo was the culprit. As you may know, I usually can't resist handling cute little critters, but luckily for me, I hesitated when I saw the threatening pokey hairs. The Saddleback Caterpillar pupates, and the adult emerges as a portly, furry-looking brown moth.



Bundle up and get out and play. Take advantage of those sunny days that come along. Be thankful.

November

Sun	Mon	Tue	Wed	Thu	Fri	Sat
		1 M&M Com- mittee Meeting 6:00 pm	2	3	4	5
6 daylight savings time ends = "fall <u>back</u> "	7 Landscape committee meeting 6:00	8 <i>ELECTION DAY</i>	9	10	11 <i>VETEREN'S DAY</i> <i>no mail</i>	12
13	14	15	16	17	18	19
20	21	22	23	24 office closed for Thanksgiving	25 office closed	26
27	28	29	30 6:15 OPEN FORUM 6:30 pm: Board Meeting			

BOARD OF DIRECTORS 2016-2017

Aaron Pressel, President
aaron.pressel@pittsfieldvillage.com

Cindy Samoray, Treasurer
Cindy.samoray@pittsfieldvillage.com

Sarah Deflon, Vice President
Sarah.deflon@pittsfieldvillage.com

Lara Cooper, Secretary
Lara.cooper@pittsfieldvillage.com

John Sprentall, Member at Large
John.sprentall@pittsfieldvillage.com

COMMITTEE CHAIRS

Ellen Johnson, Maintenance & Modification
Brian Rice, Landscape

MANAGEMENT OFFICE

Community Manager, Tomas Cottrell
Bookkeeper, Wanda Buster
Administrative Manager, Tracy Vincent
office@pittsfieldvillage.com
734-971-0233
Fax: 734-971-3421