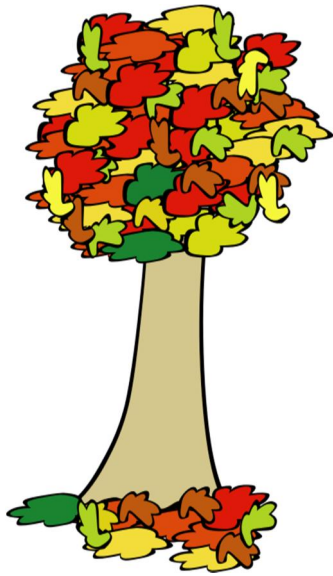


The Villager
DECEMBER 2017



Check **THIS**
out!

The First Tree
transplanted
from the Village
tree nursery.

It now resides at
2663 Pittsfield
where a Large
diseased Locust
was removed.





Something new is on the horizon! It's time to put your thinking cap on and dig into your imagination.

This Holiday Season in the Village we are having a Festival of Trees. Along with your usual holiday decorations please feel free to uniquely decorate your favorite tree.

This tree can be either an evergreen, a crabapple, a Japanese Maple, or any tree that is planted in your front yard. Use your imagination to decorate with lights, ornaments, homemade items, or whatever your imagination discovers.

This little Festival is a time for everyone, no matter of religion or faith to come together in unity; whether it be a Christmas Tree, a

Chanukah Bush or something that just expresses your feelings of faith and joy at this time of year.

Judging will be December 22 and a gift certificate for Blaze Pizza will be awarded for the most unique decorated tree. Please keep in mind this does not relate to other decorations, but your own thoughtful ingenuity toward your favorite tree.

As a time of joy and hope is upon us, let us show our true union of diversity in our happy little Village. Blessings to all and have fun!

Barbi De Longchamp

Let's Light up the Village!



Maintenance WINTER TIPS AND HINTS

Snow Birds

The following suggestions are for Residents who leave for an extended period of time in the winter months.

A suggested temperature of the home is 65-68 degrees while you are away. If you are going to be gone for an extended period of time you might consider increasing the temperature to help if the outside temperature reduces.

2) Open kitchen and bathroom cabinet doors to allow warmer air to circulate around the plumbing. Be sure to move any harmful cleaners and household chemicals up out of the reach of children.

3) When the weather is very cold outside, let the water drip from the faucet served by exposed pipes. Running water through the pipe—even at a trickle—helps prevent pipes from freezing because the temperature of the water running through it is above freezing.

4) Have someone check on your home if you are leaving for an extended period of time.

5) Turn the outside water off to the hoses. By letting the water drain and emptying the pipes this will help reduce the chance of freezing pipes.

6) Install the plastic wrap or a similar product to the windows of the home. This helps prevent the wind from seeping into the home and will maintain a constant inside temperature.



Association Management & Government

Pittsfield Village Office Hours:

Monday— Friday, 8:30 am to 5:00 pm
Office: 734-971-0233 Fax: 734-971-3421
Email: office@pittsfieldvillage.com
Website: www.pittsfieldvillage.com

ASSOCIA / KRAMER-TRIAD

Tomas Cottrell, Manager: tcottrell@kramertriad.com
Wanda Buster, Bookkeeper: wbuster@kramertriad.com
Tracy Vincent, Admin: tvincent@kramertriad.com
Colin Breed, Maint. Supervisor: office@pittsfieldvillage.com

BOARD OF DIRECTORS

Meets the last Wednesday of the month

Sarah Deflon, President:

sarah.deflon@pittsfieldvillage.com

John Sprentall, Secretary:

john.sprentall@pittsfieldvillage.com

Ellen Johnson, Treasurer:

ellen.johnson@pittsfieldvillage.com

Aaron Pressel, Member at Large:

aaron.pressel@pittsfieldvillage.com

COMMITTEES

Maintenance & Modification: Leif Millar
Meets the 1st Tuesday

Landscape: Brian Rice
Meets the 2nd Tuesday



JOIN US and BE MERRY!

Friday, December 8

5 pm to 7 pm

Holiday Season

Craft Night

Make your own Holiday Cards!!!

And also enjoy some Treats and a Holiday Movie

Holiday Spirit and Creative Minds coming together!!!

DECEMBER 2017

Sun	Mon	Tue	Wed	Thu	Fri	Sat
					1	2
3	4	5 6:00 pm: Open Forum; 6:15 pm: M&M Committee meeting	6	7	8 HOLIDAY CRAFT NIGHT and Holiday Reception with Comcast 5-7pm	9
10	11	12 6:00 pm Open Forum; 6:15 pm: Landscape Committee meeting	13	14 final day to drop off mittens/hats!!! And register to win a TV!	15	16
17	18	19	20	21	22	23
24	25 OFFICE CLOSED	26	27	28	29	30
31						

xfinity™



Pittsfield Village Mitten Tree

When you donate Mittens or Hats in the Village Office

Enter to Win a 32" Roku Smart TV

November 30– December 14

Join the Holiday Party In the Village Office

Friday, December 8

5– 7 PM



No act of
KINDNESS
no matter
how small
is ever
wasted.

–Aesop

offices.pittsfieldma.gov