

The Pittsfield Villager May 2017

This month's special events:

- **Monday, May 15—ANNUAL MEETING OF THE MEMBERSHIP 6:30 PM sign-in**
- **Saturday, May 20—ANNUAL FLOWER GIVEAWAY 11:00 AM to 1:00 PM**

Ice Cream Social Pittsfield Elementary School



Friday, June 2
5:30 p.m. — 8 p.m.
2543 Pittsfield Blvd.

DJ, Rock Wall Slide, Money Machine Inflatable, Big Splash Dunk Tank, games, raffles, silent auction, face painting, caricature, cake walk.

Pizza, beverages, and ice cream available.

*Free admission
(charge for food & games)
(734) 997-1218*

Got Bugs?

Eradico Pest Control Services has a standing weekly appt for Pittsfield Village.

``THURSDAYS``

Simply call the office 734-971-0233 to generate a work order if you experience an issue with pests.

Common problems include ants, bees/wasps, and the occasional mouse.

PARKING REMINDERS

Please be courteous to and respectful of your neighbors. It makes perfect sense that everyone would like to be able to park in front of their own front door. If you have 2 or more cars, please be mindful of this. Thank you!



NO PARKING in trash can outlines

Monday evening through Tuesday until areas are clear after Trash pick-up, and Thursday evening through Friday until areas are clear after Recycling pick-up. Thank you!



The Pittsfield Village Home and Garden Tour

Sunday, June 25th

1:00 – 4:00 PM

We are excited to announce the 1st Pittsfield Village Home and Garden Tour!

There are a multitude of creative ideas to be had, inside and out!

Take this opportunity to explore kitchen and bath remodeling, unique storage, interior décor, and garden design.

Reserve your tickets now!

Tickets are \$5 each, available only to Village residents and their guests.

Limit 4 per household. No charge for children under 12.

Ticket delivery to your Village home on Sunday, June 11.

Proceeds will be used by our Landscape Committee for Village beautification.

Ticket Payment options:

Check: Make out and mail to Ellen Johnson, 2817 Pittsfield Blvd

or

Paypal: Go to PayPal.me/lisalemb

You must have a PayPal account to use this option.

Enter \$5, \$10, \$15, or \$20 depending on the number of tickets you are ordering.

Under PayPal 'notes' enter "Village Tour" and your address (for ticket delivery)

Tickets will also be available at the Annual Meeting, May 15th
and at the Flower Give Away, May 20th.

If you are interested in offering your home or garden, we may have a few openings left for this tour, or for next year's tour!

Please contact VillageHomeTour@AOL.com to let us know how to reach you.

The Village Home and Garden Tour is not a Pittsfield Village government or management event.

"of the people, by the people, for the people"

By Lisa Joseph, Staff Horticulturist

At the end of May, we will start my favorite of all gardening tasks, planting annuals in beds and planters. Every year there are new and improved varieties to try out. As I've written before, I always keep notes in my journal about stellar performers that I loved and will use again, and about those high-maintenance duds I will be sure to avoid in the future. I have cherished plant combinations that work so beautifully together that I use them again and again. Feel free to contact me if you'd like some suggestions for your own planters.

In addition to flowers, I love to grow herbs in pots right outside my kitchen door. It is easy to snip herbs to add to food and salads and to brew in teas. Growing herbs in pots also allows you to easier adjust the soil to suit each plant, and it makes it convenient for maintenance and watering. Fertilize your herb pots every two weeks with liquid fertilizer for houseplants at ½ the strength recommended on the label. You can also use liquid fish and kelp fertilizer at half the recommended strength every three weeks. Apply fertilizer sparingly due to the fact that essential oils that

produce the flavor and aromas of your herbs are greatly reduced with heavy fertilizer application.

GUIDE TO GROWING HERBS IN POTS:

It's a good idea to throw a couple handfuls of compost into the pot with the potting mix. However, for herbs like Thyme, Rosemary, and Sage that don't tolerate moist soil, leave out the compost. Instead, add coarse sand or fine gravel for sharp drainage. Or just use a commercial potting mix for succulents.

In your herb pots, use pea gravel mulch on top of the soil. The small stones will reflect light and keep the damp soil from creating too much humidity and causing fungal diseases.

Make sure you pick your herbs regularly during the growing season. Snip off the tips of each stem, about the top inch or two, and this will encourage bushy growth.

1. Mint- easy to grow in sun to partial shade. Mint is a greedy feeder and likes to be fertilized regularly. Grow it in its own pot, at least five-gallon, and water regularly. Due to its aggressive growth, do not plant it in the ground.

2. Chives- this herb will grow in sun to partial

shade. Chives need just 4-5 hours of sun per day and have edible flowers in spring.

3. Sage- demands full sun and well-drained and leaner soil. It grows to a mature size of 24 x 24". Try one of my perfect combinations of Golden Variegated Sage in a large pot with Golden Oregano at its feet.

4. Thyme- prefers full sun and well-drained soil. My favorite is lemon thyme with its intense lemon aroma, mound of glossy leaves, and lilac flowers that attract beneficial insects.

5. Rosemary- thrives in leaner, well-drained soil and should be situated in a site with full sun. This large herb needs ample space in a large pot. The most common reason that Rosemary doesn't survive in a container is over-watering. Water only when the top two inches of soil feels dry and let the water drain out the hole in the bottom. Never leave the pot sitting in water as Rosemary will rot very easily. Fertilize only if the foliage looks yellowish and the plant is stunted.

6. Parsley- performs well in sun to partial shade. Look for a variety that tolerates heat and grows back quickly. I find that Parsley is a perfect addition to salads.

7. Basil- this herb adores full sun and heat. Be sure to water it only in the morning to avoid fungal leaf spot that infects basil plants if they are watered late in the day and not allowed to dry out. Basil grows to a large size of 24" tall. I use a variety called 'Genovese'. It's vigorous, and I love the scent and flavor of the leaves. Cut back the stems to encourage the plant to produce more leaves and to keep it from becoming leggy.

LISA'S FEATURED PLANT:

Tulipa 'Marilyn'- Lily-flowered Tulip



This 18" tall elegant beauty blooms in late April. The flowers are pristine white with vibrant raspberry streaks. Be sure to view these in bloom with other lily-flowered tulips in the Roundabout Bed. There is 'Ballerina', an eye-catching orange and fuchsia, and 'Purple Dream', a regal velvety violet purple. 'Marilyn' Tulips combine beautifully with Iris, Peony, Dianthus, Catmint, and they really stand out with plants that have wine-colored foliage.

Continued on pg. 5

Hello Village People,

It's been nearly two years since I introduced myself to you, shared my excitement to take a turn and give back to the community by serving on the board. To discover the inner workings of our community has certainly been an experience. Challenging at times, but interesting all the same to realize how it actually takes a village...to run the "business" of Pittsfield Village. Prior to this, I simply went about my business: enjoying my home, the lovely view, happy to have the yard work done, snow removed and serious maintenance taken care of for me.

One of many interesting facts I am now aware of is that to run a successful condo organization you need an accommodating and reliable management company, which we have in Kramer Triad. I also have a complete understanding and appreciation of what our monthly association payments are for: payroll for our wonderful staff, maintenance, lawn and snow service, property insurance, new roofs, painting, plumbing, water service, future needs such as new windows and a multitude of structural repairs for our existing buildings and grounds.

In addition to learning the inside-business side of living in a condo environment, I became better acquainted with the many other Village people who volunteer their time and talents to maintain the integrity of our property in the most ethical and fiscal way possible.

Being part of this operation...I'm also reminded of limitations to condo living. Each of us are unique with differing opinions, values and are free to live as we choose inside our homes. Yet outside our doors and throughout our Pittsfield Village property it is necessary to be neutral and is the reason we have rules and regulations to guide our practices.

While on the board I've seen many a request come through. Some are for individual needs effecting only that person or household and are easily granted. Others have been requests for changes that impact the "whole" based on personal preferences and fall into that limitations of condo living category. There have also been a few requests for services that may not be possible because of our antique structures and lack of off-street parking. Which is why it's important to remember "we" are "the association." Changes or enhancements beyond what we are currently working to maintain...will bring \$ignificant (with a capital \$) financial impact to all.

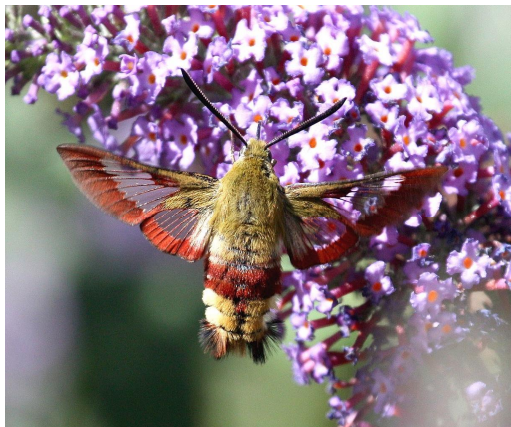
Two years ago when I stepped into the annual meeting, it was not my intention to join the board. I simply heard a call for volunteers and answered. This time around I've actually thought about it, and decided to put my name on the ballot. In this stage of life, I have the time, am willing, able and interested in serving Pittsfield Village for a few more years...if you'll have me.

Thanks for your time, and attention. It has been an honor to serve you.

Cindy Samoray
Pittsfield Village
Cindy.samoray@pittsfieldvillage.com



..IN THE GARDEN



WATCH FOR THIS INTERESTING CREATURE:

Hummingbird Moth- also known as Sphinx or Hawk Moth. Whirring wings and a stout, furry body give this moth the appearance of a small hummingbird. Instead of a beak, however, the moth has a long proboscis, or tongue, that unfurls to reach deep into flowers.

It hovers and drinks the nectar of many kinds of blossoms just like a hummer. The Hummingbird Clearwing is the most commonly seen species. It has an olive back and a red-brown abdomen. Males have a flared tail like that of a hummingbird. I have these adorable creatures hovering around my annual planters every summer. They are quite attracted to Verbena, Lantana, Agastache, and Pentas.

The larvae of the hummingbird moth is the smooth, lime green Hornworm.

Unfortunately, these large caterpillars are voracious feeders that cause considerable crop loss of tomatoes, tobacco, and potato. When I find one of these giants on a tomato plant in the garden, I pluck it off and place it on a honeysuckle in the woodland.

The flowering trees, shrubs, and bulbs are so beautiful around the community. This is one of my favorite times of the year. When all the plants are waking up and filling in, the birds are back with their cheerful morning songs, and everyone is once again out and about and enjoying the day.



Go outside and play!

POOL ATTENDENTS NEEDED



- MUST BE 18
- Must be able to work both shifts (11 am—4 pm and/or 4 pm—9pm)
- Must be able to start work Memorial Day THROUGH Labor Day
- APPLY AT THE PITTSFIELD VILLAGE OFFICE


734-971-0233

The speed LIMIT throughout Pittsfield Village is 25 MPH and sometimes, even THAT is too fast. Please spread the word.

Help keep our
community safe



MAY 2017

Sun	Mon	Tue	Wed	Thu	Fri	Sat
	1	2 M & M Mtg 6pm	3	4	5	6
7	8	9 Landscape Mtg 6pm	10	11	12	13
14 MOTHER'S DAY	15 7:00pm ANNUAL MEETING / BOARD ELECTION	16	17	18	19	20 FLOWER GIVEAWAY EVENT 11 am -1 pm
21	22	23	24	25	26	27 POOL OPENS! 
28	29 MEMORIAL DAY OFFICE CLOSED	30	31			

BOARD OF DIRECTORS 2016-2017

President, Aaron Pressel:

aaron.pressel@pittsfieldvillage.com

Vice-President, Sarah Deflon:

sarah.deflon@pittsfieldvillage.com

Secretary, Lara Cooper:

lara.cooper@pittsfieldvillage.com

Treasurer, Cindy Samoray:

cindy.samoray@pittsfieldvillage.com

Member at Large, John Sprentall:

john.sprentall@pittsfieldvillage.com



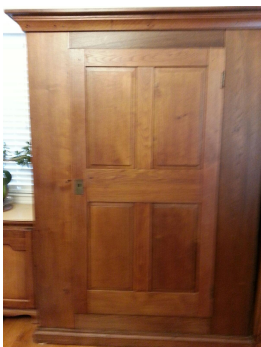
Mark your Calendar

Antiques for Sale:

Beautiful antique round oak table with six (6) leaves \$350

Beautiful antique walnut armoire—great for storage \$600

734-231-0871



June 3

ANNUAL COMMUNITY-WIDE
YARD/SIDEWALK SALE!

TIP: START YOUR SORTING NOW

August 5

ANNUAL POOL PARTY!

Hope to see everyone there!

