



Pittsfield Village

GREEN SPACES • GREAT NEIGHBORS



July 2018

POOL PARTY

Saturday, July 28

5:00pm-8:00pm

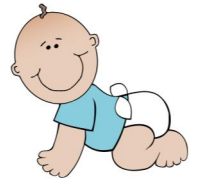
- **Band starts @ 5:00 pm**
- **Picnic-style dinner @ 6:00 pm**
- **Sub sandwiches, chips, cookies, watermelon, and drinks!**



LIVE MUSIC!
George Bedard
and the Kingpins

Friendly Pool Reminder:

We hope you are enjoying the pool this year! Just a reminder to the families, if you have your infant, baby or toddler in the pool, please be sure to **USE SWIM DIAPERS!** Thank you!



WELCOME!

Please welcome the Village's 2018 pool attendants Chandler, Lorri, Lynsey, & Nan! Should you need assistance while enjoying the pool, on-duty pool attendants will be sporting the below Pittsfield Village t-shirts!



Seasonal Reminders

It's summer and most of us are getting outside more (except maybe when it's excruciatingly hot!). Below are the season's important reminders from Pittsfield Village:

1. ALWAYS pick up after pets!
2. Fire pits are not allowed!
3. Yard Waste — if you have yard waste, place it out for pick-up in a paper yard-waste bag, on trash collection day (Tuesday) — within the painted lines.



IN THE GARDEN- July 2018

By Lisa Joseph, Staff Horticulturist

I always await the end of June, anxiously anticipating the bewitching aroma that emanates from the flowering Linden trees. I like to stand beneath them and breathe in the fragrance. I was born on a stifling hot day at the end of June, and I believe that the dreamy Linden floral bouquet was imprinted on my brain. It is my signature scent!

FEATURED PLANT:



DWARF SOLOMON'S SEAL- *Polygonatum humile*

This 6-inch tall slow-growing ground cover should be planted where it can be easily viewed up close. Dwarf Solomon's Seal is a delightful perennial with glossy pale green leaves and small white bell-shaped flowers in late spring. It will spread slowly by rhizomes, or underground horizontal stems, to form an unobtrusive ground cover. The perfect spot for this lovely little darling would be in rich loamy soil in partial shade, a spot that gets morning sun and afternoon shade.

WEED WATCH:

YELLOW WOOD SORREL- *Oxalis*

Every garden I see these days has been bombarded with this productive weed. Yellow Wood Sorrel has foliage that is similar to that of Clover, except that its three heart-shaped leaflets have a crease up the center, and the small 5-petaled flowers are bright yellow. It will grow in both sun and shade with a tough root system that branches out in the soil. If you leave any of the root intact while attempting to dig it out, the weed will grow right back. If you are hand weeding, take care to dig out



the entire tenacious root system. The prolific seed capsules explode when touched, spewing seeds in your face and all over your garden! Some of the seedpods carry up to 5,000 seeds, so you can understand why it is important to control this weed before it sets seed.



KEEP IN MIND:

Milkweed is absolutely not an attractive perennial for your foundation beds (*seen here taking over a lovely perennial garden*). It is a plant that reaches 2 to 6 feet in height with large leaves and a thick stalk. The leaves turn reddish as the plant matures, later dropping from the stem where a milky sap seeps out. Milkweed is known as a colonizer. The root system has long creeping rhizomes and spreads aggressively. New shoots emerge from the rhizomes some distance from the parent plant. A stand of Milkweed can develop from a single plant, crowding out other plants in your garden. Milkweed will also get started by seed in neighboring beds, as numerous seeds are produced, each attached to a white hair to allow for successful dispersion by wind. Even if planted in the back of your unit, Milkweed will soon become a problem in the landscapes. We have to be conscientious about the aesthetics of the community and plant this beneficial perennial in its proper place. **Please DO NOT plant Milkweed in your foundation beds.**



Even if planted in the back of your unit, Milkweed will soon become a problem in the landscapes. We have to be conscientious about the aesthetics of the community and plant this beneficial perennial in its proper place. **Please DO NOT plant Milkweed in your foundation beds.**

LANDSCAPE REQUESTS

- Applications must be received by the office on the Wednesday PRIOR to the committee meeting. The committee meets on the 2nd Tuesday of each month. July requests must be received by July 5.
- **All requests must be accompanied by a photo and / or a drawing!**
- Co-owner open forum is held at 6pm before each meeting
- Forms are available on pittsfieldvillage.com or townsq.io.

So, what can we do to help?

By creating and protecting a Monarch Waystation or a Butterfly Garden, we can help to offset the loss of Milkweed and other nectar sources. These butterfly areas can be developed in unused plots of land or along roadsides. The Village landscape crew is in the planning stage of a Pollinator Garden that is to be located on Pittsfield between Norwood and Oakwood.

Watch for our progress, and I will respond to any requests you may have for this garden project.

Our email address is pvmastergardener@gmail.com.

Have you registered for TownSq?

Log-in to townsq.io or download the app from the App store and check it out!

TownSq makes it easy to connect with **Pittsfield Village** and access the resources you need for better community living, all through one user-friendly app!

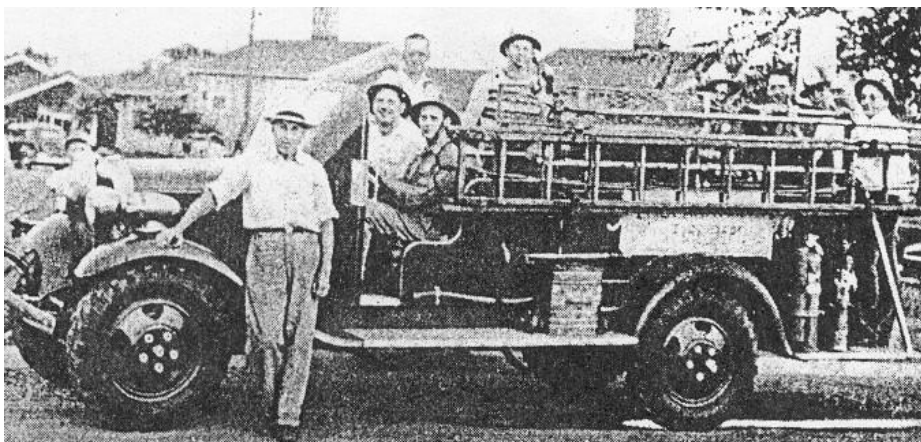
TownSq is the best single-platform solution for managed communities. No other tool addresses the unique social and administrative aspects of condo living all in a single app, allowing managed community members to use one place to manage community members to use one place to:

- Engage with neighbors (who are registered)
- Pay Association fees from any device
- Reserve the clubhouse
- Track your maintenance requests
- Access Association documents
- Get updates when community projects are complete



EXTERIOR MODIFICATION REQUESTS

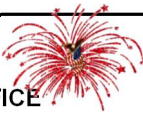
- Applications must be received by the office on the Wednesday PRIOR to the committee meeting. The committee meets on the 1st Tuesday of each month. July requests must be received by July 5 (meeting postponed due to holiday).
- **All requests must be accompanied by a photo and / or a drawing!**
- Co-owner open forum is held at 6pm before each meeting
- Forms are available on pittsfieldvillage.com or townsq.io



Above: a view of the office, once upon a time, if you were standing in front of what now is a Barber Shop

A Fire house!

July 2018

Sun	Mon	Tue	Wed	Thu	Fri	Sat
1	2	3	4  OFFICE CLOSED	5	6	7
8	9	10 Landscape Committee 6:00 pm Open / 6:15 pm Meeting	11	12 M & M Com- mittee 6:00 pm Open / 6:15 pm Meeting	13	14
15	16	17	18	19	20	21
22	23	24	25	26	27	28 POOL PARTY! 5:00 pm - 8:00 pm
24	25	26	27 Board Meeting 6:15 pm OPEN / 6:30 pm Meeting	28	29	30

Pittsfield Village Office

Monday— Friday, 8:30 am to 5:00 pm
Office: 734-971-0233 Fax: 734-971-3421

Email: office@pittsfieldvillage.com / www.pittsfieldvillage.com

ASSOCIA / KRAMER-TRIAD

Kendra Montri, Manager: kmontri@kramertriad.com
Wanda Buster, Bookkeeper: wbuster@kramertriad.com
Tracy Vincent, Admin: tvincent@kramertriad.com
Colin Breed, Maint. Supervisor: office@pittsfieldvillage.com

COMMITTEES

Maintenance & Modification: Leif Millar, Chair

Landscape: Brian Rice, Chair

2018-2019

BOARD OF DIRECTORS

Meets the last Wednesday of the month

Ellen Johnson, President

ellen.johnson@pittsfieldvillage.com

John Sprentall

john.sprentall@pittsfieldvillage.com

Jessica Lehr

jessica.lehr@pittsfieldvillage.com

Aaron Pressel

aaron.pressel@pittsfieldvillage.com

Kat Irvin

kat.irvin@pittsfieldvillage.com