

## Window Box Awards!



Did you pick up a flat of flowers at the annual Flower Giveaway?



Every year, Pittsfield Village provide a flat of annual flowers so residents can decorate their window flowerboxes. This year, the Landscape Committee will be walking around the community looking at your handiwork. Residents who picked up a flat of flowers this past May are eligible. Winners will be announced in next month's newsletter.



## MORE GOOD NEWS

The spring dumpster that coincided with the community yard sale was so successful, the Board approved a dumpster rental for the fall. If you are unable to sell, donate, or upcycle items, please feel free to utilize the dumpster that will be in the community building parking lot.

**The dumpster will be delivered on Thursday, September 26, 2024.** The office will send an email to the community after the dumpster is delivered.

**Items NOT allowed** in the dumpster—dirt, concrete, brick, rubber tires, paint, hazardous materials, and mattresses/box springs. You will have until the end of Sunday, September 29, 2024, to use the dumpster. It will be picked up on Monday, September 30, 2024. Please contact the office with any questions.

## Leave the Leaves Pilot

By Erin Brightwell

Hi, neighbors! This is a short column to introduce the “Leave the Leaves” pilot Pittsfield Village is running this coming fall, or rather to *reintroduce* it, since David Brassfield helpfully gave a shout-out to it in the “Board Beat” section of the August newsletter.

This fall/winter, as part of our Board’s commitment to sustainability, Pittsfield Village is trying out a new pilot program, one that will allow you to opt out of leaf blower use in your individual garden beds and instead...leave the naturally occurring leaf drop in your plot as is. Of course, opting to “leave the leaves” is not akin to opting out of any garden maintenance. Rather, it’s a commitment to steward your garden space through the retention of *healthy* leaves as a natural mulch. So you can expect some clean-up responsibilities and a need to keep your foundation leaf-free.

(An itemized list of resident responsibilities, much like those of the garden marker program, will be included on the enrollment form, so please be sure to review them.) But the ecological benefits—to topsoil, root systems, and insect habitats, including those of our beloved and ecologically critical pollinators—are manifold.



The proposal was developed in response to anecdotal evidence that individual residents had long been asking our landscape crew to skip leaf blowing in their garden beds by making signs, by flagging down workers when they arrived and asking them to move on, etc. We hope that by creating a systematic, streamlined way to opt out of leaf blower use, we will not only benefit our gardens but also reduce the burden on our landscape crew, who would no longer need to worry about finding home-made signage or last-minute arm-waving owners asking them to desist.

I should add that although I’m the one writing to you now, putting together a pilot was by no means a solo effort. This is a “grass roots” (if you’ll pardon the pun) initiative that was workshopped and refined in conversations and brainstorming sessions of our Sustainability Working Group; we also drew on multiple rounds of discussion with the Landscape Committee, our Condo Board, and our Office Staff. Thank you to everyone who took the time to carefully read and offer thoughtful comments on the proposal as it evolved!

Last but not least, I’d like to include a few FAQs we heard in putting this together and offer some answers.

**Q1:** Does “leaving the leaves” require extra work in the spring?

**A1:** The short answer is “No.” If you *want* to dig the leaves into the soil, that is not damaging, but **spring mulch can go directly on top of left leaves**. There is no extra pre-mulch clean-up required. Great news for all parties! (Do note, though, that if you decide you don’t like your leaves after all, it’ll be your responsibility to clean them up.)

**Q2:** Will there be a lot of blowing of someone else’s leaves into my space?

**A2:** The good news is that science shows the risk of large-scale leaf drift to be minimal.

According to the [US government](#), the wind speed required to move dry leaves from the ground is between 8-12 mph. (For comparison, for wind to raise loose paper from the ground and move it requires 13-18 mph.) The average annual wind speed in Ann Arbor is 10.2 mph, per [City-data.com](#). This suggests a fairly low risk of frequent large-scale relocations of dry (or heavier wet) leaves.

**Q3:** Will this increase my risk of leaf build-up on my deck or sidewalk?

**A3:** No, this proposal pertains **only** to individual garden beds in the “Leaves the Leaves” pilot. Superior will continue to perform fall leaf clean-up in the common areas, on our decks, on our sidewalks, and in the garden beds of anyone who is not in the pilot.

We are so excited to try out this program, and we hope you are, too! Please be on the lookout for a communication from Kendra (or Tracy at the office) which will contain details about how to enroll, whom to contact with leaf-related concerns, and other practical information. This will come via email, but a limited number of hard copies will be available in the box in front of the main office, too. Please read it carefully, and if you think it’s for you, sign up! We are limiting this initial run to 40 units, just to save wear and tear on the legs of our “evaluation team” (i.e., those of us who will be checking in on your leaves), so enrollment is first come, first serve.

# Getting to Know You

*by Barb De Longchamp*



This month we have the pleasure of meeting Jody Kohn on Pittsfield. She hails from the greater Detroit area and has been here since 1995, 29 years, and loves the peace and quiet. You say, what peace and quiet on Pittsfield? Jody's dwelling sits back in a courtyard, off the beaten path, with peace and quiet!

She is an avid gardener. Unfortunately, living in the courtyard, her gardens are somewhat hidden. However, on her deck she has an amazing, raised vegetable bed. It is high enough to eliminate the hungry little furry critters. Poor little groundhogs.

Jody got her feet wet in our beloved Borders Book Store, and became their expert in Publicity, Promotions and Public Relations at their headquarters. Not only did she have the opportunity to travel throughout the world promoting Borders, but she also met some interesting people. On one occasion she met President Clinton, who came to her store in Dearborn. He was looking for an anniversary present for his wife Hillary, and spotted a pin Jody was wearing. She happily gave it to President Clinton for Hillary. Another day, she was thrilled with the opportunity to meet the Dalai Lama and hold his hand. This was quite a thrill considering she is also a Buddhist.

Having parents that were different religions, at the age of 10 her mother gave her the opportunity to choose her religion. With her research she decided upon Buddhism. The philosophy of Karma, good things come to you, cause and effect, and reincarnation appealed. Jody is still a practicing Buddhist.

Jody is no stranger to pain. She was in a serious car accident years ago in Franklin Village and has had chronic pain since she was 26. In 2000 she had another accident causing her to leave her beloved Borders. In 2008 she gained a second master's in social work, already having one in Counseling.

Following graduation, she started as a private practice psychotherapist specializing in chronic pain and illness as well as anxiety disorders. She counsels with the thought of accepting the pain with a question, "What do I do, be miserable? Or accept that pain is just part of what I live with?" The mindfulness of "what can I do in this moment in time?" Come back to the now.

There is much we can learn from this very thoughtful and interesting woman. We close with Jody's view on life with her treasured quote from Buddha, "Pain is inevitable, suffering is optional."

Thank you, Jody Kohn, for letting us "Get to Know You!"



MESSAGE FROM THE  
LANDSCAPE COMMITTEE

*Theresa Moore*

Now that fall is just about here, please remember to remove the seed pods from any milkweed plants you may have.

*P.S. Only Butterfly Weed & Swamp Milk Weed are allowed in the Village.*

Also, don't forget to deadhead Goldenrod, which can aggressively spread from seed.

Goldenrod



Butterfly Milkweed



Swamp Milkweed



## HOW TO PREP YOUR CONDO FOR FALL—5 ORGANIZATION TIPS

The weather's turning, and if you live compactly in a condo unit, that means switching an already multi-purpose space to focus on hats, scarves, and potential turkey-related objects. Here are five organizational tips you can break out well ahead of time to get your condo ready for fall and keep winter from turning into one long hug with your clutter.

### Cycle your closets!

One of the easiest ways to keep your condo feeling bright, breezy, and uncluttered is to not stuff your closets with clothes and coats but cycle them with the season. It'll make laundry easier, save on hangers, and make sure you aren't wedging cold or wet boots between dry shoes which won't be used until spring. Make sure your summer clothes are clean and dry before storing them somewhere cool for the winter. Once they're away, it's time to crack out the winter clothes. Check out your fall and winter coats for any needed repairs

## HOW TO PREP YOUR CONDO FOR FALL—5 ORGANIZATION TIPS

Continued...

now, so you can get those loose buttons fixed well before the first snow flies, and make sure your sweaters haven't picked up moths over the summer. If your scarves, hats, and mittens need cleaning, now's the time: wash and repair that extra winter gear and prevent that musty wool smell from setting up shop in your place.

### Retire the deck for winter!

If you've got patio furniture, plants, or other décor on your deck, now's the time to wipe down, tie down, and put it away for the winter. Wipe down any patio furniture with a damp cloth and soapy water, and clean and store any outdoor rugs or decorations you've used to liven up your balconies over the summer. If you'll be storing patio furniture outdoors during the winter, make sure it's well secured. Stormy fall winds can blow lighter objects right off balconies, causing a serious risk to the tender heads below. Bike ties, which are stretchy but strong, are great for this, and available cheaply at most hardware stores.

### Switch out your spices!

For many of us, autumn means a real difference in how we cook: out with the cool and fresh, and in with the warm and spicy. The beginning of autumn is a great time to check on your spice jars, send any stale ones to the great big kitchen in the sky, and refresh anything that needs a top-up. Giving your spice cabinet (or drawer, or rack) a good clean and bringing the flavors you'll use most to the front is a simple task, but it makes a difference. You'll save time every evening during dinner prep, keep your kitchen cabinets fresh and clean, and go into the holidays ready to host—or guest—without any last-minute runs out to the store for yellow curry or nutmeg.

### Make time for a deep clean!



Some of the products we use for tough cleaning jobs, like scouring the oven, can put off serious fumes—and it's best to get that dirty deed done while it's still warm enough to air out your unit by throwing a few windows open. Make time for a serious deep clean of your appliances, bathrooms, and anything else that uses a necessarily chemical cleaner before the weather gets frosty. A smoky oven will be much harder to deal with in colder weather, and much more likely to set off your smoke alarm or irritate any allergies, and if you're the type to get a little uncomfortably high off the Windex, it'll save you that embarrassing admission.

### Break out the doormats!

You can get away without them during the summer months, but in the damp fall and slushy winter, good doormats and trays to contain snowmelt and drips are a must—especially with the hardwood and carpet you'll find in most condo units. If your doormats and boot trays are in good shape from last year, give them a cleaning before setting them out. If there are any rips, tears, or just too much wear, invest in a new one—one that's large enough for guests—well ahead of time.



### NEIGHBORHOOD WATCH

While we don't have a Neighborhood Watch, we do want to remind residents to **LOCK ALL VEHICLES.**

We have had reports of vehicle break-ins in the community. Stay alert. Stay Safe. Stay Smart.







## Fun and Creative Idea!

### ART!

Have your child color this picture above, then drop it off at the office or in the drop box (w/name and unit!) and we'll have a special feature! **PV KIDS ART** in the coming months! Questions? Contact Tracy. I look forward to seeing these come in! Thank you!

## POOL CLOSING!

**LAST DAY FOR SWIMMING IS  
SUNDAY, SEPTEMBER 8!**

## BACK TO SCHOOL TIPS

(FOR PARENTS)

### Top 10 List (Mental Health Edition)

- 1 **Remind your child that they're not alone.** Nearly everyone feels behind in school this year. Hang in there and just do your best!
- 2 **Help your child know what to expect.** Find out the school's policies this year. What's different about lockers, classrooms, lunch or anything else?
- 3 **Praise all your child's efforts!** Life's more than grades. Recognize their curiosity, kindness and bravery.
- 4 **Pay attention to your own anxiety.** Kids can sense anxiety. Talk to other adults to ease worry and get professional help if you need it.
- 5 **Get enough sleep.** Preschoolers need 11-12 hours, school-aged kids need 10 hours and teens need 9-10 hours.
- 6 **Schedule quality time together.** Just 1 hour makes a difference. Here's a topic of conversation: What are you most excited about this year?
- 7 **Encourage daily movement.** Children need 1 hour of physical activity a day — riding a bike, a dance party or whatever gets them moving.
- 8 **Keep a routine.** Waking up and going to bed at the same time every day improves mental health. (This goes for adults too!)
- 9 **Identify ways to calm stress.** Taking deep breaths or holding something comforting in your hand (like a smooth rock) quietly relieve stress.
- 10 **Just ask!** Ask your child if they're worried about being back in the classroom. Be a good listener and support them.



Concerned about your child? Talk to their school counselor. Or call our 24/7 Helpline at **512-472-HELP (4357)** for free emotional support day or night. Press 1, then 1.

Pittsfield Village Condominium's

## 12<sup>TH</sup> Annual Pooch Plunge

**BRING YOUR DOG(S)  
DOWN FOR A DIP IN THE  
POOL!...**



**Sunday, September 15<sup>th</sup>**

**1:00 pm - 2:00 pm**

If you see any of these, please destroy them. Thank you!  
Landscape Committee Chair

- Asian Longhorned Beetle



The Asian longhorn beetle is an invasive wood-boring insect. Throughout the entire life cycle of the beetle, it is feeding on trees, preferring hardwoods, resulting in the death of many trees.



- Brown Marmorated Stink Bug



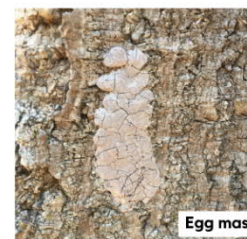
The brown marmorated stink bug is an invasive species that is found everywhere in the United States. They do not harm humans, except for their smell. The presence of this stink bug is concerning not just for farmers because it feeds on many high-value crops in their immature and adult life stages, but for others who have ornamental plants like lilacs.

- Spotted Lanternfly

Found already in Livingston County, the Spotted Lanternfly is an invasive species that can change Michigan's entire landscape for the worse! It will affect our agriculture and natural resources (70 varieties of crops and plants including grapes, apples, hops, and hardwood trees). This insect also leaves a stinky residue on plants that attracts mold and unwanted critters.



- About 1 inch long
- Folded wings are gray to brown with black spots
- Bright red hind wings



- Looks like chewing gum of putty with a waxy coating
- 1.5 inches



- ¼ to ½ inch long
- Wingless and beetle-like
- White spots

## Board Beat: Summer's Ending

Submitted by David Brassfield, Member of the Board

The Wednesday, August 28 Board meeting sailed expeditiously along, taking care of business. Here are the highlights.

- **“Leave the Leaves” Pilot Program.** Erin Brightwell came back before the Board with a revised plan for implementing this program in late fall. At the July meeting, Board members had raised a number of questions and concerns about the plan as conceived and presented. Action was postponed so that members could gather their thoughts and suggestions and forward them on to Erin and her group to guide a revision. Erin presented the result, and it was quickly approved along with a proviso that participation be limited this season to a maximum of 40 residents. Erin and her group will coordinate with the Landscape Committee to monitor compliance, evaluate operation and outcomes, and report back to the Board next spring. Application materials and instructions will be available from the office sometime in the next few weeks. Announcements will be made by email and on the Neighborhood and Sustainability Group Facebook pages. [See Erin’s article elsewhere in this Newsletter.]



- **Return of the Dumpster!** In response to the popularity of the dumpster made available to residents last June for disposing of unwanted items, presumably pulled out for disposal during “spring cleaning,” the Board has agreed to provide another at the end of September to facilitate fall cleanup. As before, the dumpster will be located at the back of the Community Building parking lot for residents to dispose of unwanted belongings that can’t be donated for reuse by others. **Please:** no electronics, mattresses, box springs, tires, construction materials, or home toxics! **Dates:** Thursday, September 27 to Sunday the 30th, or until the dumpster is full—whichever comes sooner.
- **Service Contracts.** Two big ones this month! The Board approved a 3-year renewal of our contract for **Snow Removal** with our long-time service provider Margolis. And...*drumroll, please!*...we’ve arrived now at the last chapter of our 10-year partnership with Citi Roofing, the **Replacement of All Building Roofs** and addition of much-needed insulation throughout our attic spaces! Both contracts have come in well within their projected budgets.
- **The Pool.** Four things to note: **Closing:** This Sunday, September 8, is the final day of the current season. The annual **Pooch Plunge** will, however, take place on the following Sunday, September 15. **New Furniture:** taking advantage of bargains that could not be refused, we have managed to purchase a set of 20 new lounge chairs for use at the pool beginning next season! The old ones will be sent into a well-deserved—one might say, dearly desired!—retirement. Lastly, **Rewritten Rules** intended to provide greater clarity have been approved and will be posted in place of the current ones at the beginning of next season.

(Continued on following page)



- **More Pricey Digging.** On the heels of the three sanitary sewer connector line repairs and replacements on Richard approved last month—each to the tune of \$6,000-plus—has come yet another, this one on Parkwood at a cost of \$7,000-plus and in addition to tearing up the yard, requiring excavation out into the middle of the street. We can expect these to keep coming. Our system is, after all, 80 years old and counting!



### News from Our Standing Committees

- **Landscape.** In addition to its serious work of fielding owner requests, monitoring landscape upkeep, and developing policies and plans for the future, the Committee is taking time out this month to promote a little fun. Yes, the ***Window Box Inspectors are going on patrol!*** They'll be looking out for the best handiwork of those who picked up flowers at the Giveaway in May and used them to beautify their front flowerboxes. No need to fill out applications or campaign for nominations! If yours is ***a work of floral pulchritude***, Landscape will find you out! Winners and awards will be announced in next month's *Newsletter*.
- **Maintenance and Modification.** This committee is charged with helping residents to make permissible changes and additions inside and outside their homes. To facilitate such projects and provide compliance standards for carrying them out, the committee has over time developed a ***library of written specifications***. Every so often it becomes necessary to create new ones or to revisit and revise an older one. Over the past several months two new specifications have been drafted and an older one updated. The following have been or will soon be submitted to the Board for consideration and approval.
  - **Trash Cart Enclosure Paving.** A draft proposal has been submitted for ***adding pavers to front enclosures and garden beds*** so that carts can be more easily rolled out to the curb and back on collection days. One resident has been allowed to perform such an installation at his unit as a test case. The Board has reviewed the proposed specification, but will put off a decision to accept or reject it until spring, when we can see how well it has weathered the onslaught of winter snow and ice. Some members wanted time as well to visit the test installation and assess its impact on the visual appeal of the unit as viewed from the street.
  - **Whole-House Back-up Generators.** These are currently not permitted in the Village, though an exception was made last fall for an owner whose health issues have made coping with power interruptions quite difficult. That installation was regarded as a test case. Like the paver spec, this one is also on hold, this time because there is a question as to whether converting a portion of the common area to private use by installing a permanent outdoor generator would constitute a violation of ownership restrictions set forth in the Association's Master Deed. The matter has been referred to our Association legal counsel for guidance.
  - **Outdoor Storage.** At its September 2 meeting the Committee approved a draft revision of our current specification for adding outdoor storage boxes and tool organizers to a unit. The proposed changes will be submitted for Board consideration at the September 25 meeting.



(Continued on following page)

## The City's "Pittsfield Village Improvements Project": Design and Planning Updates

On Thursday, August 15, the Ann Arbor Engineering Department held the first in a planned series of public Informational Sessions to provide community members the opportunity to learn more and ask questions about the major infrastructure upgrades coming to us over the next two to three years. An estimated 75 or so residents turned out at the Pittsfield School for a presentation by OHM Advisors, the firm hired to do project design and planning. OHM began their work here last fall and are aiming to wrap things up this fall with the completion of bid documents for the City to send out in late December or early January to firms wishing to be awarded the project construction contract.



Senior Project Manager Chris Elenbaas led the presentation, providing both an overview and a fair level of detail for each major project element:

- New, higher-capacity water mains and additional meters—one for every two units
- Higher-capacity storm water pipes throughout the Village, additional street inlets, and curb drains for all units
- Storm water overflow basins strategically located to control surface flooding during heavy rain storms and to reduce pressure on our two major waterways down to the Huron River
- Re-lined sanitary sewer pipes throughout the Village, new pipes along Norwood
- Roadway repaving, reconstruction, and traffic calming where necessary
- Sidewalk gaps filled in
- Defined "All Ages and Abilities" shared-roadway bicycle corridor on Pittsfield between Edgewood and Washtenaw

Ample opportunities and time were provided for responding to audience questions and concerns. A follow-up Information Session is planned for later this fall, another in the spring, and so on as work progresses through the 2025 and 2026 construction seasons.

Over the past many months I have written extensively about all elements of this project, and I invite readers here to review those articles, beginning with my first write-up back in November 2023 after City Council voted to move forward with the project. All past Newsletters may be accessed at the Village website: <http://pittsfieldvillage.com/info/newsletters.php>.

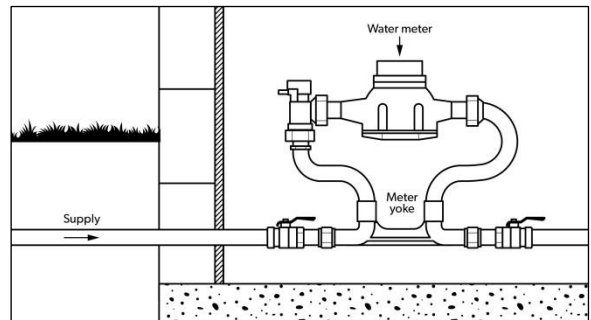
In the remainder of this article, I am going to confine myself to presenting new information that came out at the Informational Session and in a subsequent phone conversation I had with Chris Elenbaas. Here are the highlights:

- **Traffic Calming!** After years and years of resident complaints, the City is now planning to do something to cut down on speeding and reckless driving on our Village streets. Our biggest dragway, Pittsfield Boulevard, is to receive the most aggressive treatment. Bump-outs will be added along its entire length at every intersection between Parkwood and Packard. Speed "tables" will be installed

*(Continued on following page)*

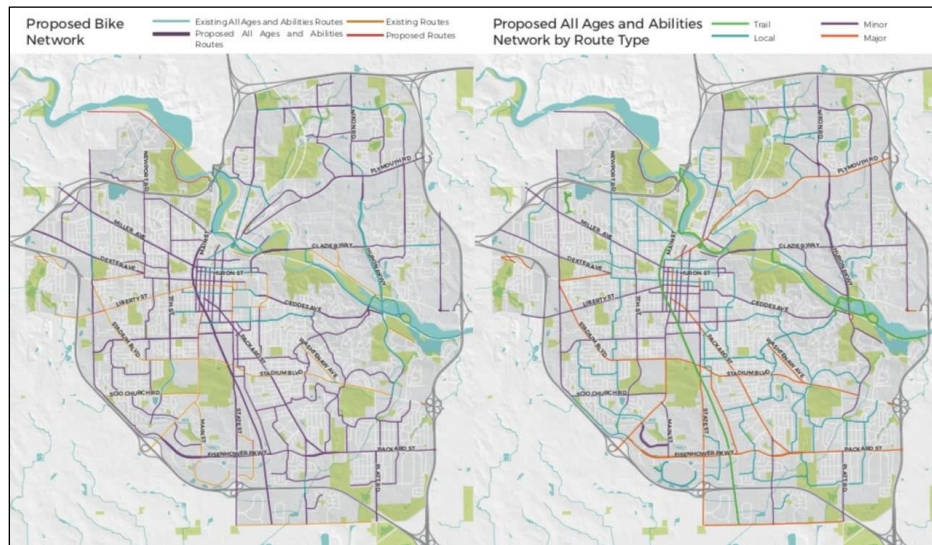
across the roadway at intervals between intersections. The Edgewood loop from Pittsfield on the north to Pittsfield on the south will be given the same treatment. Parking will be maintained on both sides of these streets, except, of course at bump-outs. Because the speed “tables” are sufficiently shallow—unlike speed bumps or “humps”—vehicles will be permitted to park on or over them, so we will lose no currently legal spots with the new configuration. The bump-outs at intersections will narrow the streets both physically and perceptually, as will the lines of parked vehicles on each side. Such narrowing tends to cause drivers to slow down, as do the traffic tables. Experience elsewhere in the City and across the country shows that these “calming” measures substantially reduce speeding and reckless driving behavior on residential streets, which is the City’s aim here. One further benefit of the bump-outs will be better visibility for making turns, because large vehicles will be prevented from parking too close to intersections as they do currently, thus blocking the view of drivers attempting to move out into the roadway and putting them at risk of collisions with oncoming traffic. Pedestrians will also be able to more easily check for oncoming or turning traffic before attempting to cross.

- Water Metering.** Most every condo unit in the Village shares a connection to the water main with one other unit. Typically, a service line runs from the main and into the basement of one of the two units. From there another line will run along the front basement wall to the second unit. Under the new system planned for our community, each service line from the main to the building will be connected to a meter inside the first unit’s basement. All told, we will have about 211 meters when all is said and done. Billing will continue to come to the Association, not to individual owners; we will, however, most likely be put into a rate tier that is more expensive than what we are currently charged. This is the trade-off for receiving a modern service with greatly improved capabilities for fire protection, uniform water pressure to all units, leak detection and prevention, and interconnectedness with mains supplying neighboring homes. Yes, the higher fees for a 21st-Century water system will factor into our monthly assessments, but it is way too early to say by how much—if at all—since water costs are only one of many expenses that may rise or fall over time.
- Storm Water Overflow Basins.** Three are planned: (1) on the east side of the Pittsfield School ball field, (2) in the swale leading to the culvert beneath Parkwood near Jeanne, (3) in the middle of the Swift Run greenspace bordered by Norwood, Whitewood, Packard, and Pittsfield. Each of these will be designed as graded depressions where water can collect during heavy rains and then slowly empty into an outlet drain once the rain is past. Grading for each from the perimeter to the lowest point will be relatively shallow and follow current contours where possible. In the case of the Parkwood and Swift Run basins, the purpose of grading will be to slightly enlarge and slightly deepen the existing depressions or slopes. Ground cover for these basins will be grass for the most part with, perhaps, a shift to native water-thirsty plants at the lowest points. The ball field basin will likely receive the widest application of native plant ground cover. None of the basins will require a barrier fence, though it is possible the School may want something to keep children off the native plantings portion.



*(Continued on following page)*





### Proposed Ann Arbor Bike Network

- Bicycle Corridor.** Ever since this element of the project was announced, residents have worried and fretted about what might be built and how it might affect parking. It turns out that not much will change. The City is gradually building out a wide network of bicyclist-friendly roadways and paths. In many places there are separate, protected lanes; in others, narrow lanes are demarcated by white striping paralleling the roadway edge; as often as not, though, there is only intersection signage to indicate that a road serves as a designated part of a system route. On Pittsfield, we will have that last: signs to announce that the stretch between Edgewood and Washtenaw is one part of a larger bike route system segment that begins at Platt on the west, runs east along Edgewood, then turns north along Pittsfield, and ends at Washtenaw, at which point a cyclist can join the Washtenaw route, such as it may be. Because Pittsfield has been made safer through the addition of traffic calming devices and because it will include some markings on the pavement and signage at intersections and perhaps at points along the way, it will meet the requirements of “All Ages and Abilities” corridors for bikers. That’s it! That’s what so many of us have been so worried would upend our lives along Pittsfield Boulevard!

This concludes my report for now. The City has established a project web page that will be periodically updated. The address is <https://www.a2gov.org/departments/engineering/Pages/Pittsfield-Village-Improvements.aspx>. An earlier comprehensive narrative of the entire project plan as originally envisioned can be found at the following address, beginning on page 76 (take note that a number of changes have occurred in the year since, as the design and planning process has played out):

<https://a2gov.legistar.com/View.ashx?M=F&ID=12313279&GUID=AFD73CC3-8DBC-4138-A0A0-0D156F8DA713>

### Next Board Meeting

Wednesday, September 25, at 6:00 pm, in person at the Village Office or remotely online. Log-in information will be provided via email before the meeting. All residents are welcome to attend. Complete minutes of the August meeting will be posted online after acceptance at the September meeting.

# STAFF

## ASSOCIA / KRAMER-TRIAD

Kendra Zunich, Manager: kzunich@kramertriad.com  
 Wanda Buster, Bookkeeper: wbuster@kramertriad.com  
 Tracy Vincent, Admin: tvincent@kramertriad.com  
**General Info / Maintenance:** office@pittsfieldvillage.com

# BOARD

## BOARD OF DIRECTORS 2024—2025

[condoboard@pittsfieldvillage.com](mailto:condoboard@pittsfieldvillage.com)

Ellen Johnson, President  
ellen.johnson@pittsfieldvillage.com

John Sprentall, VP  
john.sprentall@pittsfieldvillage.com

Jessica Lehr, Treasurer  
jessica.lehr@pittsfieldvillage.com

David Brassfield, Secretary  
david.brassfield@pittsfieldvillage.com

Linda Ross, Member at Large  
linda.ross@pittsfieldvillage.com

## Pittsfield Village Office

Monday— Friday, 8:30 am to 5:00 pm  
 734-971-0233 Fax: 734-971-3421

[www.pittsfieldvillage.com](http://www.pittsfieldvillage.com)

Visit the PV website, call or email the office with your **Questions/concerns/requests:**  
[office@pittsfieldvillage.com](mailto:office@pittsfieldvillage.com)

## COMMITTEE direct emails:

- [landscapecommittee@pittsfieldvillage.com](mailto:landscapecommittee@pittsfieldvillage.com)
- [mm@pittsfieldvillage.com](mailto:mm@pittsfieldvillage.com)

## SEPTEMBER Meeting links (copy & paste in your browser)

**M & M - September 3:**  
<https://meet.goto.com/382533197>

**Landscape - September 10:**  
<https://meet.goto.com/672269701>

**BOD - September 25:**  
<https://meet.goto.com/385307485>

**Your Local Neighborhood Mobile Auto Detailer**

**Mo's Auto Detailing**

Mohamed Asker  
 Passionate car enthusiast and meticulous cleaner turned professional detailer

**SERVICES**

- INTERIOR**
  - Thorough Brush & Vacuum
  - Carpet & Seat Extractions
  - Pet Hair Removal
  - Steam Cleaning
  - Leather Conditioning
  - and more! @ website
- EXTERIOR**
  - Hand Wash & Wax
  - Claybar
  - Wheel Polish
  - Hybrid Ceramic Wax
  - Engine Bay
  - and more! @ website

DETAILING IS... A JOB? A BUSINESS? A CRAFT? CHECK OUT THE WEBSITE TO SEE WHAT WE CAN DO FOR YOU.

**Ways to Book:**

- Online at [MosAutoDetailing.com/contact](http://MosAutoDetailing.com/contact)
- Text 734-726-4307

**WEBSITE** **INSTAGRAM** **FACEBOOK**

Scan QR Codes with Photo mode

In addition to the services offered, I make informative and fun behind the scenes content. Transitioning from hobbyist to professional, I share my lifelong passion for automobiles and meticulous cleaning. Let me help you perfect your craft in the art of vehicle maintenance.

[MosAutoDetailing.com](http://MosAutoDetailing.com)  
 734-726-4307

Dedicated- Passionate  
 Mobile - Ann Arbor  
 + Washtenaw county



# SEPTEMBER

Sun	Mon	Tue	Wed	Thu	Fri	Sat
1	2 <b>Labor Day</b> <b>OFFICE</b> <b>CLOSED</b>	3 M&M committee 6:00 pm	4	5	6	7
8 <b>POOL</b> <b>CLOSES!</b>	9 Go Doc meeting 3:00 pm	10 Landscape committee 6:00 pm	11	12	13	14
15 <b>Pooch</b> <b>Plunge 1-2</b>	16 <b>Trugreen</b> Application	17	18	19	20	21
22	23	24	25 <b>BOD</b> meeting 6:00 pm	26 <b>Dumpster</b> <b>at Office</b>	27	28
29 last day to place items in dumpster!	30					